





The timeless elegance of the Pond™ basin is ideal for both contemporary and more traditional interiors. The shallow vessel appears to float above the benchtop when installed with the spacer supplied, and is available in two sizes and a range of solid surface colours.

SPECIFICATIONS

Finishes:



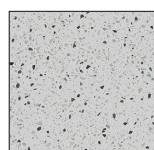
White



Cloud (D)



Aria Carrara (P)



Terrazzo (P)

D: Deluxe  
P: Premium

Material:

Matt Solid surface - 100% Acrylic

Overflow:

No

Tap Holes:

No

Waste Size:

40mm

Waste Supplied:

Yes - 40mm plug and waste in polished chrome, and spacer in polished chrome

Weight:

Pond™ 450 - 3.4kg, Pond™ 510 - 4.4kg

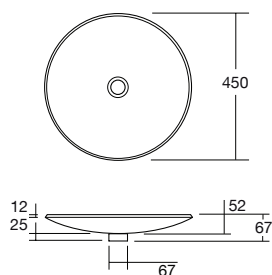
Bowl Capacity:

Pond™ 450 - 3.1L, Pond™ 510 - 5.2L

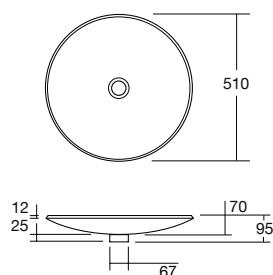
Faucet Details:

For best results, select a spout/faucet with a cascade style aerator (no spray) that uses approx. 5 litres per minute with the water falling at a 90 degree angle to the surface of the vessel.

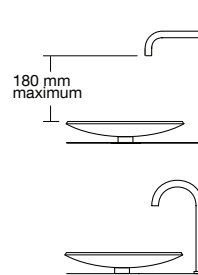
Pond™ 450



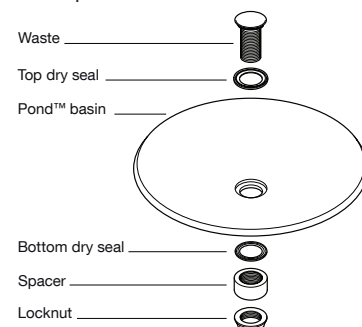
Pond™ 510



Faucet Details:



Components:



Dimensions are shown in millimetres. Due to the handcrafted nature of Omvivo products measurements are subject to a +/- 5mm manufacturing tolerance.