





The Venice 500 Sem Inset basin is an elegant piece with smooth flowing lines and is the ultimate statement for the classic contemporary bathroom. Manufactured from solid surface it has a smooth matt finish that is exceptionally hard wearing and durable. Venice 500 semi inset is designed to be mounted inset into the bench top and perfectly suit the Venice furniture. It is supplied with a white solid surface pop up plug and waste.

In Australia, the Venice collection is available exclusively through Reece Bathrooms.

SPECIFICATIONS

Finishes:



Matt White

Softskin Finish: Available, refer to Softskin Finishes document

Dimensions: 500mm x 350mm x 130mm

Material: Solid surface

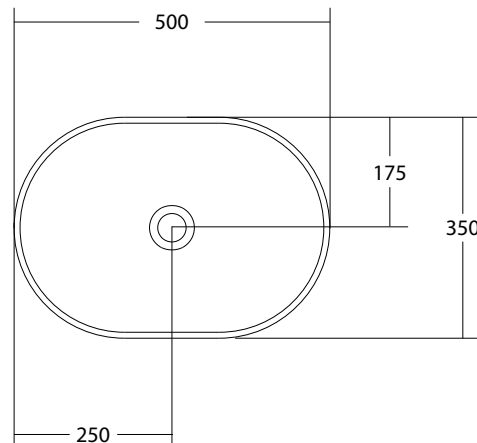
Overflow: No

Waste Size: 32mm

Waste Supplied: Yes - 32/40mm
With solid surface plug and pop-up waste

Weight: 5kg

Bowl Capacity: 11L



Dimensions are shown in millimetres. Due to the handcrafted nature of Omvivo products measurements are subject to a +/- 5mm manufacturing tolerance.